

# ROTARY GREASING UNIT RBE04

DP-D-006-000006 // rotary head 150 mm



## APPLICATION

The RBE04 rotary greasing unit is designed for non-contact wetting of internal contours.

## DESCRIPTION

The RBE04 rotary greasing unit is a rotary head with electric drive and optional rotary control. The material is applied without air by centrifugal force. The continuous supply of lubricant ensures uniform greasing of the workpiece.

## ADVANTAGES

- ▶ High flexibility, material application for a wide range of component contours
- ▶ Airless material application by centrifugal force with various viscous media
- ▶ Very low grease carryover
- ▶ Minimum wetting diameter Ø from 20 mm (depending on the application)

## TECHNICAL DATA

### Mechanical data

Minimum wetting diameter	Ø 20 mm
Length with standard rotor head 70 mm	285 mm
Length with standard rotor head 150 mm	355 mm
Rotor Ø	Ø 10 mm
Other lengths and diameters on request (depending on medium and general conditions)	
Height	60 mm
Depth	60 mm
Medium connection	1/8"
Permissible media	oils and greases NLGI class 0–3
Conveying capacity	max. 1 cm <sup>3</sup> /s
Weight	1.85 kg
Volume	< 70 dB(A)

### Motor data

U <sub>N</sub>	24 V
I <sub>N</sub>	4.8 A
P <sub>2</sub>	89 W
n <sub>N</sub>	max. 17.000 U/min
M <sub>N</sub>	5 Ncm
Protection class	IP54

### Environmental conditions

Operating temperature	10–40 °C
Humidity	40– max. 70 %

# ROTARY GREASING UNIT RBE ACCESSORIES



## ROTARY CONTROL FOR RBE02 / 04

DP-D-006-000014

In order to be able to guarantee process-reliable greasing, it is possible to monitor the rotation. The monitoring is carried out optoelectronically.

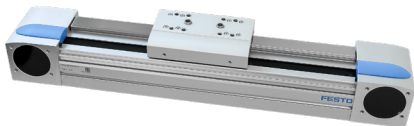


## VCA / VC ANGLE HOLDER

RBE02 // DP-D-006-000016 / DP-D-006-000022

RBE03 // DP-D-006-000021 / DP-D-006-000023

Angle holder to attach the VCA / VC flow meter directly to the rotary greasing unit.



## ELECTRIC INFEED AXIS

### TOOTHED BELT AXIS WITH ACCESSORIES

Horizontal // DP-D-005-000020

Vertical // DP-D-005-000024

Toothed belt infeed axis with brake (safe-stop), enables a safe stop when operating a light curtain or other safety component.

Includes mounting plate and bracket for attaching the infeed unit to customer's rack (hole punching to be agreed upon).

Available in horizontal or vertical version.

- ▶ Drive motor with gearbox and controller
- ▶ Cabling, incl. wiring of the components
- ▶ Plug-in connections
- ▶ Standard stroke 200 mm
- ▶ Other stroke sizes possible on request

## UDS HOLDER FOR RBE03

DP-D-006-000024

Holder to attach the UDS ultrasonic flow sensor directly to the RBE03 rotor lubrication unit.

## SEALING PACKAGE FOR RBE03

DP-D-006-000025