

ROTARY GREASING UNIT RBE02

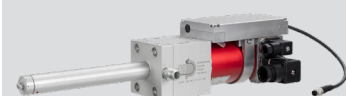
DP-D-006-000001 // rotary head 150 mm

DP-D-006-000003 // rotary head 70 mm

DP-D-006-000007 // rotary head 260 mm



Optionally available with rotation control



APPLICATION

The RBE02 rotary greasing unit is designed for non-contact wetting of internal contours.

DESCRIPTION

The RBE02 rotary greasing unit is a rotary head with electric drive and optional rotary control. The material is applied without air by centrifugal force. The continuous supply of lubricant ensures uniform greasing of the workpiece.

ADVANTAGES

- ▶ High flexibility, material application for a wide range of component contours
- ▶ Airless material application by centrifugal force with various viscous media
- ▶ Very low grease carryover
- ▶ Minimum wetting diameter Ø from 36 mm (depending on the application)

TECHNICAL DATA

Mechanical data

Minimum wetting diameter	Ø 36 mm
Smallest rotor	Ø 14 mm
Largest rotor	Ø 20 mm
Rotor dimensions	Various rotor configurations available (We would be happy to determine the perfect configuration for your application in a metering test).
Length with standard rotor head 70 mm	280 mm
Length with standard rotor head 150 mm	350 mm
Length with standard rotor head 260 mm	455 mm
Height	60 mm
Width	60 mm
Permissible media	oils and greases NLGI class 0–3
Conveying capacity	max. 1 cm ³ /s
Weight	1.9 kg
Volume	< 70 db(A)

Motor data

U _N	24 V DC
I _N	4.8 A
P ₂	89 W
n _N	max. 17.000 U/min
M _N	5 Ncm
Protection class	IP54

Environmental conditions

Operating temperature	10–40 °C
Humidity	40– max. 70 %