



GENERAL ACCESSORIES



GREASE DISTRIBUTOR 5-FOLD INCL. CONNECTION NIPPLE

DP-D-003-000006 // G 1/4"

DP-D-003-000007 // G 1/8"

DP-D-003-000024 // G 1/2"

5-fold grease distributor with double nipple for optimum distribution of the material feed. The outlets that are not required can be closed off in a pressure-tight manner using the screw fittings supplied.

VARIANTS

G 1/4" = internal & external thread

G 1/8" = internal & external thread

G 1/2" = internal & external thread

▶▶▶ FP001, FP015, FP045, FP045-T, FP050, FP050-T, FP200, FP200-T, FP200-S



SUPERSTRUCTURE FOR BARREL PUMP OPERATING UNIT

DP-F-003-000012 // single

DP-F-003-000022 // tandem

DP-F-003-000023 // FP200-S

Frame made of aluminum profile for receiving and mounting the barrel pump accessories and the barrel pump operating unit.

▶▶▶ FP045, FP045-T, FP050, FP050-T, FP200, FP200-T, FP200-S



VENT HOSE FOR BARREL PUMPS

DP-F-003-000019

Mounted on the vent cock of the barrel pump suction pipe.

TECHNICAL DATA

Length	1 m
Max. pressure	20 °C > 800 bar, 60 °C > 450 bar
Bending radius at 20 °C	> 20 mm
Connection	G 1/8"

▶▶▶ FP001, FP015, FP045, FP045-T, FP050, FP050-T, FP200, FP200-T, FP200-S



GENERAL ACCESSORIES



DIRECT SWITCHOVER/STOP AUTOMATIC

DP-F-003-000016

The automatic changeover for tandem barrel pumps is mounted in the follower plate. After the first barrel has been completely emptied (on contact with the bottom), there is an automatic switchover (automatic changeover) to the second pump mechanism. When both barrels are completely emptied, the pump switches off automatically (automatic stop), thus preventing air from being sucked in.

▶▶▶ FP200-T



DRY RUN SAFETY

DP-F-003-000020 // single

DP-F-003-000021 // tandem

The valve for automatic shut-off of the compressed air supply is triggered when an increased conveying speed is detected. This prevents unwanted emptying of the container, e.g. if the material line breaks.

▶▶▶ FP050, FP050-T, FP200, FP200-T, FP200-S



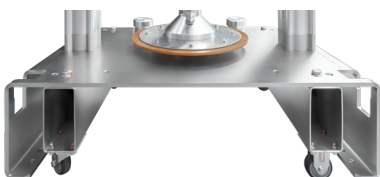
CHECK VALVE PACKAGE

DP-F-003-000008 // G 3/8"

DP-F-003-000027 // G 1/2"

Prevents the medium from flowing back into the inactive pump. The valve closes automatically at the pump outlet against the direction of flow.

▶▶▶ FP050-T, FP200-T



WHEELS FOR BARREL PUMP FP050

DP-F-003-000015

Set of two fixed and two swivel castors with parking brake.

▶▶▶ FP050



GENERAL ACCESSORIES



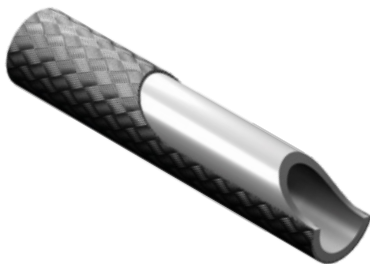
ROTATING COUPLING

DP-K-008-000007 // G 1/4"

DP-K-008-000008 // G 1/8"

Flexible connection between high-pressure hose and components. The coupling prevents torsion of the hose or unwanted opening of fittings and can be rotated in any direction.

▶▶▶ FP001, FP015, FP045, FP045-T, FP050, FP050-T, FP200, FP200-T, FP200-S



HIGH PRESSURE TEFLON HOSE

DP-D-002-000003 // G 1/8"

DP-D-002-000004 // G 1/4"

DP-D-002-000005 // G 3/8"

The high pressure teflon hose is used for medium pressure applications with hydraulic fluids at high temperatures as well as for aggressive media for the chemical industry, surface technology and 2-component plants. It is suitable for continuous temperatures from -50 °C to +150 °C and +230 °C at operating pressures up to 2 mpa and is resistant to almost all hydraulic fluids and chemicals.

Inner layer material: polytetrafluoroethylene

TECHNICAL DATA

Connection thread	Outer Ø	Max. operating pressure	Min. bending radius
G 3/8"	13.0 mm	175 bar	120 mm
G 1/8"	9.5 mm	240 bar	75 mm

▶▶▶ FP001, FP015, FP045, FP045-T, FP050, FP050-T, FP200, FP200-T, FP200-S